

logitech



WHICH ROOMS BUNDLE IS RIGHT FOR YOUR SPACE?

Your guide to optimizing your office
space for hybrid success



INTRODUCTION

The office is open again –and things have changed, with more people than ever before working from home or hybrid. As such, the priority of the office has changed from a focus on in person collaboration to video communication –and the configuration of the office needs to change with it.

Where once a boardroom might have been constantly populated with a rotating assortment of external guests and sandwich platters, it's now being used solely for video calls. But this doesn't mean the office is obsolete –far from it. While hybrid life does afford a lot of convenience, many collaborative tasks are simply easier in person. And with the right facilities available, the opportunities are ripe for the new office to make the video conferencing experience

even better. Fortunately, businesses are now in the position of being able to fine tune their strategies and spaces to suit the new world of work.

With 1 in 3 global employees requesting better video conferencing equipment, optimizing office spaces to accommodate this is pivotal. Bespoke-configured video conferencing equipment is no longer a nice bonus, but an essential part of business success in the years to come. And Logitech is here to help, with pre-configured video conferencing solution collections to suit every type and size of space.

Let's start with a look at how you can get the best of your meeting spaces.



SMALL ROOMS

By 2024, it's estimated that approximately 75%¹ of video meetings will take place in rooms with a capacity of 4-6 people, so it's worth investing in your spare spaces. In fact, with the Small Rooms solutions even the smallest huddle and focus rooms can become effective digital collaboration hubs. The Small Rooms bundle includes our [Rally Bar Mini conference camera](#), a [Tap](#) or [Tap IP meeting room controller](#), and your choice between an appliance-based or PC-based deployment.



THIS BUNDLE IS PERFECT FOR YOU IF...

- ✓ Your meeting room can fit up to 6 people
- ✓ You want big boardroom performance from a smaller area
- ✓ Your meetings need to feel like an in-person huddle
- ✓ You don't have space for bulky cables and accessories



PREMIER VIDEO PERFORMANCE

[Rally Bar Mini](#) is the premier all-in-one video bar for small rooms, offering 4K video, true-to-life color, and a host of features to keep teams in focus, no matter how busy your space is. Using a combination of AI, human perception, and motorized pan and tilt technologies, this video bar homes in on the action, adapting to suit the dynamics of the room and filter out unnecessary background noise and clutter.

And the best part? With Rally Bar Mini, you can run supported video conferencing applications directly on the device using appliance mode, or you can connect via USB to virtually any PC or Mac® with no additional software required.

RICH, NATURAL SOUND FOR SMALL SPACES

Sometimes the biggest ideas are born in the smallest rooms. Rally Bar Mini's powerful audio ensures that everyone in your small meeting space can hear and be heard. Low distortion speakers project room-filling sound, while mics with adaptive beamforming make sure that every voice is clearly heard.

Our patented anti-vibration suspension system enables natural two-way conversation that sounds just like talking in person.

JOIN MEETINGS EASILY

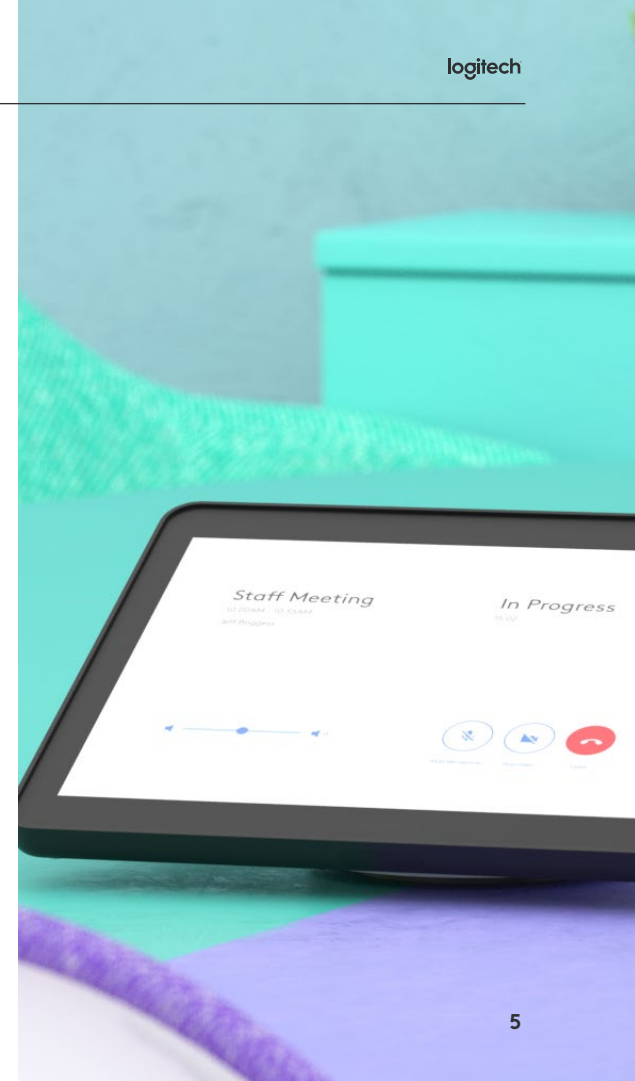
With touch controllers joining meetings becomes a seamless, stress free experience. With intuitive touch-screen operation, [Tap](#) and [Tap IP](#) take the strain out of using a shared meeting space.

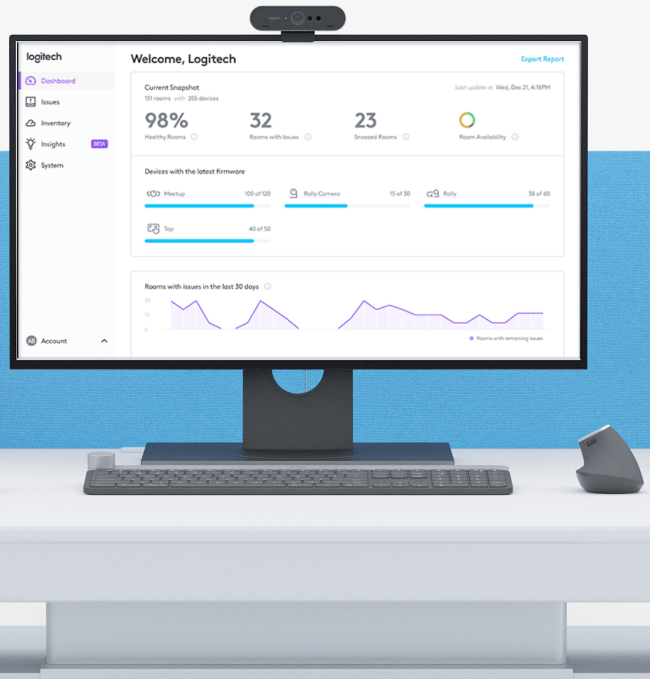
With calendar connectivity, your teams will have all the information they need to join a meeting with one tap –no more fussing around with forgotten call links or hastily searching for emails from two weeks ago.

CLUTTER-FREE SPACE

Nobody likes unsightly tangles of cabling –but this poses a particular issue for those with smaller spaces, where clutter stands out and adds chaos for already overworked IT teams. When there’s nowhere for clutter to hide, the Small Rooms commercial-grade cable management systems and versatile mounting options can make your space easier to move around and work in with organized cabling, alongside making it more versatile with different ways to configure your set-up.

For example, Rally Bar Mini features innovative cabling channels to hide unsightly cable clutter. The multipoint cable retention system allows cables to flow left, right, up or down without ever becoming unplugged. Versatile mounting options work with your space, including above or below the display, or right on the table. It always looks great.





MONITORING & MANAGEMENT MADE EASY

[Logitech Sync](#) is a meeting device management platform that enables you to support large-scale video deployments as easily as possible. With this innovative piece of cloud-based software, you can remotely manage thousands of Logitech devices across your business from one convenient platform, minimizing the need for time-costly site visits.

Sync provides three core functions: Monitor, Manage and Measure.

The monitoring function gives your IT team the ability to automatically and intelligently monitor your devices

in real-time, preventing issues by flagging them before they turn into real problems or begin to affect your staff. Rather than reacting when things go wrong, you'll be ahead of the curve with Sync's proactive and preventative bird's eye view of your system –no more downtime or interruptions.

The peace of mind provided by Sync's automated monitoring and management means that you can focus on growing and scaling your set-up and teams, all while ensuring that everything works well and runs seamlessly in the background.

MEDIUM ROOMS

Big enough for the presentations, cozy enough for one-to-ones: if you have a medium-sized room, you've got the perfect opportunity to create a dedicated video conferencing zone that fits all your team's needs and the Medium Rooms solution is the perfect bundle to make it happen.

It includes our [Rally Bar conference camera](#), a [Tap](#) or [Tap IP meeting room controller](#), and your choice between an appliance-based or PC-based deployment.

THIS BUNDLE IS PERFECT FOR YOU IF...

- ✓ Your meeting room can fit up to 16 people
- ✓ Your meetings should sound clear and natural while suppressing background noise
- ✓ You need studio quality video to enable productive meetings
- ✓ You want the choice of different ways of configuring and mounting your video conferencing set-up



PICTURE PERFECT

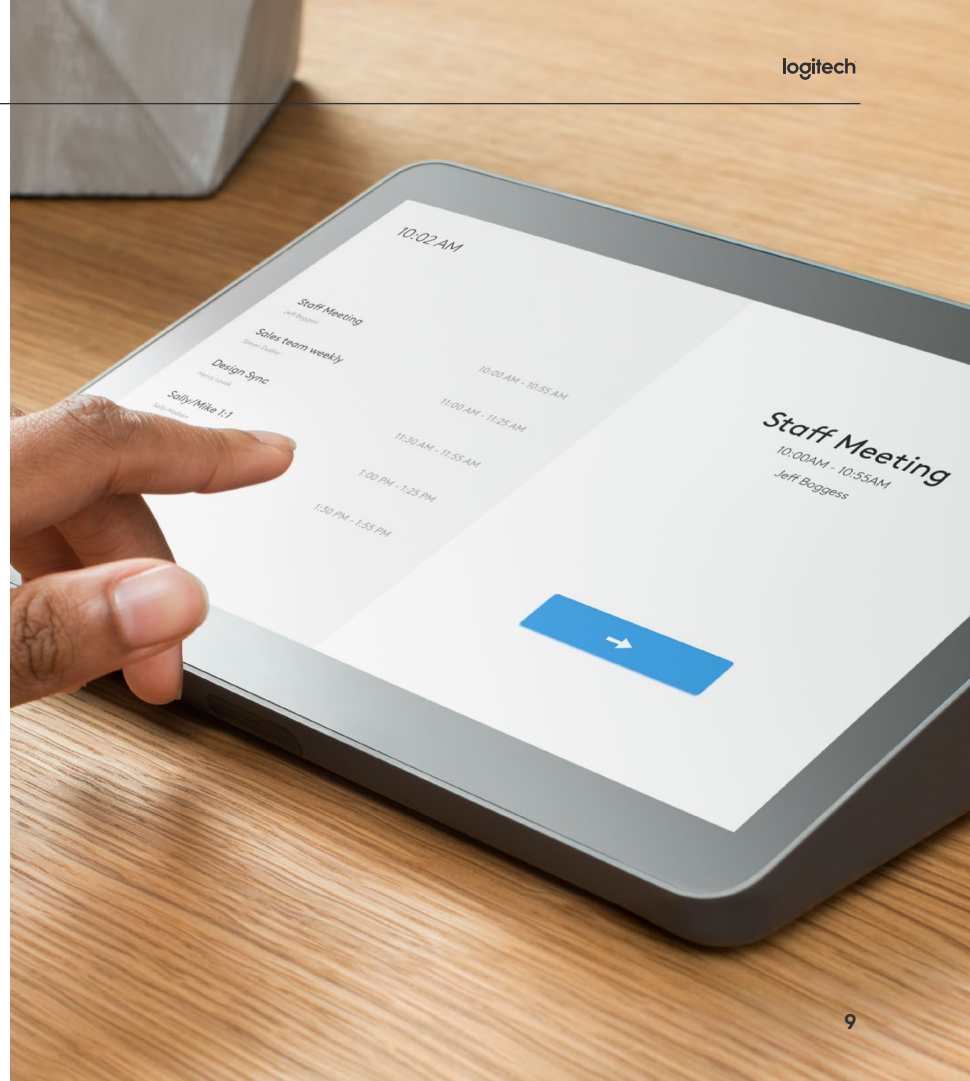
[The Rally Bar camera](#) that comes with the Medium Rooms collection delivers the premium performance you'd expect from a Logitech solution in a simple, easy to install, all-in-one video bar. With cinema-quality video, AI viewfinder functionality and lossless optical zoom, the Rally Bar makes it easy to accommodate larger groups on video calls, ensuring that everyone is seen and heard.

It also gives you the option to run supported video conferencing applications directly from the device using appliance mode, or connect via USB to almost any PC or Mac® with no additional software required.



MAKE MEETINGS EASY

Bringing multiple people together isn't always simple, which is why the Medium Rooms collection comes with a [Tap](#) or [Tap IP touch controller](#). There is no faster way to kickstart a meeting than by leaning into the simplicity of one touch to join. Tap shaves minutes off meeting time by reducing how long it takes to launch a call. And when that call is over, Tap is already prepared for the next meeting.





LOUD AND CLEAR

Mid-size rooms may not need auditorium-level speakers, but that doesn't mean your staff should be making do with the suboptimal audio. [Rally Bar](#) features powerful low distortion speakers, which project room filling sound. Meanwhile, mics use advanced beamforming technology to make sure that every voice in the room is clearly heard. Plus, our patented anti-vibration suspension system enables natural two-way conversations that feel just like talking in-person.

Right out-of-the-box, Rally Bar comes with a 15 foot mic pick up range. And, if you need greater coverage, you can expand the range with up to three [Rally Mic Pods](#). Our AI base RightSound technology automatically elevates the speaker in the room while suppressing unwanted background noise.

CLEAN CABLES AND DEPENDABLE DEPLOYMENT

When you need to deploy meeting room technology across numerous offices and locations, you need to move quickly and with minimal effort. Secure cable management makes installs simple and quick, while ensuring cables and components are firmly attached, organized, and out of the way.

When we designed [Rally Bar](#), we made it a priority to optimize the setup process for IT. Rally Bar features innovative cabling channels and built-in cable retention, allowing for quick clean installs. Plus, a variety of mounting options allow you to tailor your deployment to the unique needs of your space.



MANAGE VIDEO COLLABORATION REMOTELY

Whether you've got a single meeting room or thousands of devices across a range of offices, [Logitech Sync](#) makes it possible to conduct on-demand and scheduled updates across your entire system of video conferencing equipment from one simple dashboard. From the comfort of your desk, you'll be able to deploy the latest firmware to every connected meeting room, while the ability to schedule updates minimizes disruption to business activity – update overnight, zero downtime, no site visits, everyone wins.



LARGE ROOMS

In many organizations, large meeting rooms have more complex equipment and a more elaborate setup that can be intimidating for the average meeting organizer. But it doesn't have to be this way. With Logitech's Large Room solution, larger spaces can be as easy to outfit, manage, and use as a huddle room.

The Large Rooms bundle includes our [Rally Plus Conference Camera](#), a [Tap](#) or [Tap IP + Meeting Room Controller](#), and your choice between an appliance-based or PC-based deployment.



THIS BUNDLE IS PERFECT FOR YOU IF...

- ✓ Your meeting room can fit 16-46 people
- ✓ You're looking to create an equitable meeting experience where everyone feels seen and heard
- ✓ You need broadcast-quality video and room-filling audio
- ✓ You need to deliver presentations professionally, no matter where staff are working from



EVERYONE IN FOCUS

With large conference rooms, it's vital that the camera can capture and focus on people who may be seated quite a distance from the front of the room. Total room coverage is important.

That's why the [Rally Plus](#) solution features [Rally Camera](#). This premium PTZ camera offers razor-sharp 15X HD zoom, an expansive 90° diagonal field of view, and powerful 4K sensor to capture every person in the room with truly phenomenal video quality.

HEAR AND BE HEARD

For large rooms, modular and expandable audio components are important to ensure people further from the camera can still hear and be heard. Rally Plus includes two ultra-low distortion speakers with clear, room-filling sound. [Rally Speakers](#) are mounted at the front of the room to offer the most natural conversational experience—because voices and video are coming from the same direction.

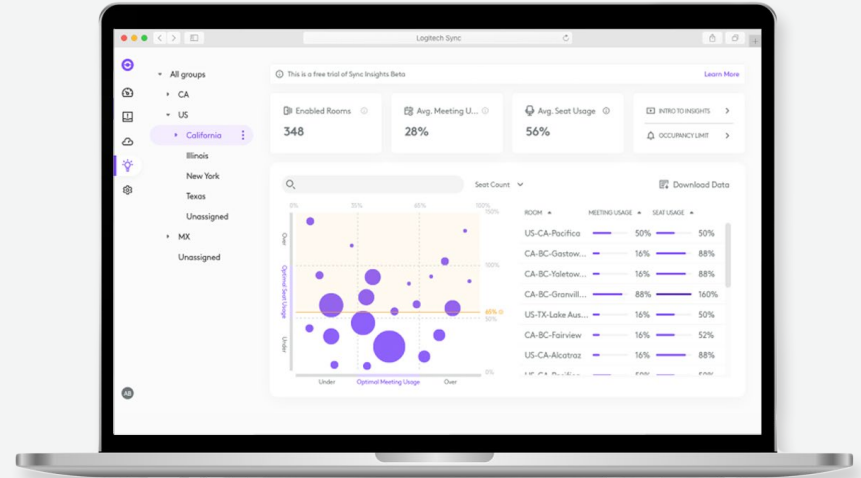
[Rally Plus](#) also includes two sleekly designed mic pods. Each mic pod contains multiple beamforming elements to capture speech, not distractions. In larger spaces, you can deploy up to five additional mic pods to extend the beamforming mic matrix throughout the room.

MEASURE DEVICE PERFORMANCE

[Logitech Sync](#) gives you active insights about how your meeting spaces are being used, with actionable real-time advice on how to optimize your set-up based on your unique usage patterns. Sync can help your IT team to understand what needs to change to get the maximum value out of your rooms, such as how to configure seating arrangements. (And this provides a host of useful data for health and safety and HR teams, too.)

INTUITIVE MEETING CONTROLS

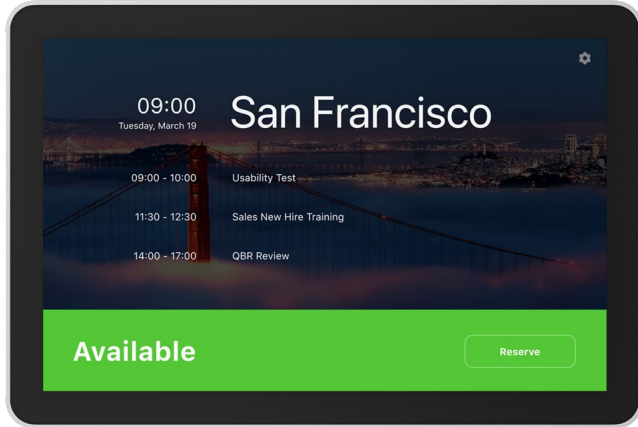
One-touch-to-join. What could be simpler? [Tap](#) and [Tap IP](#) add intuitive touch-screen controls to your meeting space. This purpose-built touch controller has just the right presence with a spacious 10.1" display and sleek, low profile. Plus, built-in cable retention and strain relief ensure a clean deployment and prevent unwanted disconnections.



DIFFERENTIATE EACH SPACE FOR ADDED VALUE

While IT can't control meeting outcomes, they can go beyond generic room requirements and ensure that the technology in each space is optimized for the intent of each meeting. Whether they're for listening, conversing, collaborating, or high-level decision-making, meetings are unique and come in many forms, with different goals. It's important to make meeting spaces differentiated from each other, and conducive to a specific purpose, so that employees have what they need to achieve the outcomes they want.





MAXIMIZE MEETING ROOM USAGE

Want to further maximize use of your meeting spaces? Add [Tap Scheduler](#) to help workers easily find and claim the right space. Tap Scheduler makes it easy to see meeting details and reserve a room for ad hoc or future meetings.

BRAINSTORMING MADE EASY

Creative collaboration doesn't have to be more difficult on camera - in fact, it can be even easier than in real life with [Logitech Scribe](#). This AI-powered whiteboard camera allows you to effortlessly share your whiteboards into video meetings, making it easy to brainstorm and generate ideas on hybrid calls. It even has a transparency effect, allowing viewers to see through the presenter so details can be pointed out and gestured to without obstructing the whiteboard - perfect for presenting all those freshly generated concepts.



SUPPORT ANY VIDEO CONFERENCING APPLICATION

Meeting rooms typically have a default video conferencing software. This makes joining meetings faster and easier. It also allows IT to standardize deployments and streamline meeting room management across their organization. But sometimes employees need to use other meeting applications.

[Logitech Swytch](#) addresses this need by allowing anyone to plug in a laptop and join any virtual meeting or webinar.



ENTERPRISE-GRADE PEACE OF MIND

Logitech offers a helping hand, as soon as you need it, with [Logitech Select](#). Logitech Select is a comprehensive service plan that provides you with a dedicated Customer Success Manager, ultra-responsive 24/7 support, and advanced, customizable Sync analytics.

With Logitech Select, you can gain peace of mind knowing that all of your room needs are in reliable hands and that continuity will never be an issue. And when combined with Sync, Logitech Select can provide you with key operational insights that make your organization not just more collaborative through video conferencing, but more competitive.

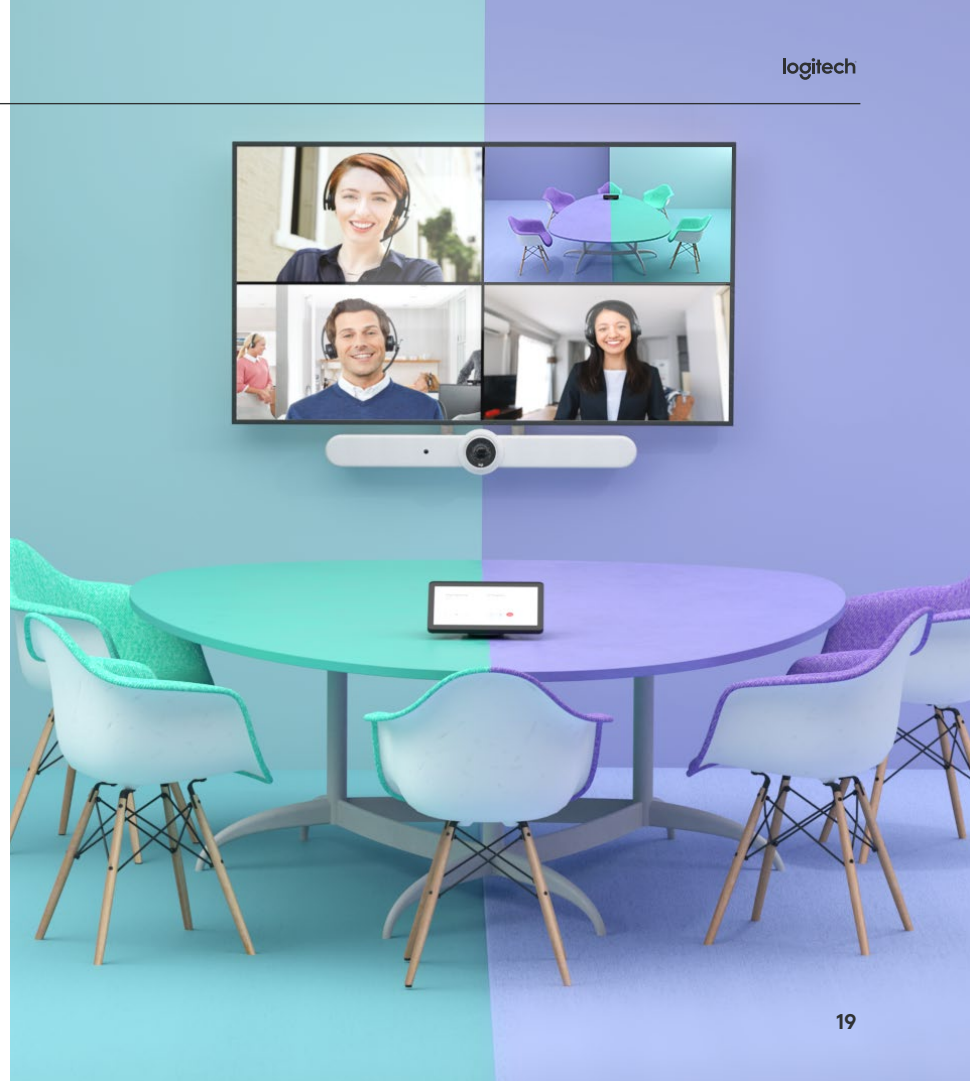


CONCLUSION

Video conferencing has never been more essential for any business looking to stay on top, as hybrid life continues to dominate the way we work.

As such, there has never been a more important time to invest in having the right equipment in place to support your team. There are huge rewards to be reaped by those who take advantage of this pivotal moment –and those who do will be in the best possible position to achieve success in the new world of work.

As you've seen, any space, no matter how big or small, can be easily transformed into a hub of video collaboration with a few simple adjustments. Your space holds a tremendous amount of potential, from allowing staff to join meetings on different platforms efficiently, to hosting collaborative whiteboard sessions -it's simply a matter of having the right tech in your toolkit. And there's no better or more purpose-built match to make this happen than Logitech's bespoke Rooms solutions.



DISCOVER WHAT ELSE THE ROOMS COLLECTION CAN DO

Learn more, www.logitech.com/vc



logitech®

Logitech Inc.
7700 Gateway Blvd
Newark, CA 94560 USA

+1 510-795-8500

Logitech Europe S.A.
EPFL – Quartier de l’Innovation
Daniel Borel Innovation Center
CH-1015 Lausanne

+41 (0)21 863 55 11

Logitech Asia Pacific Ltd.
4700 NW Camas Meadows Drive
Camas, WA 98607

+1 360-817-1200

¹Logitech Article: Optimize mid-sized meeting rooms for video conferencing.

© 2022 Logitech. Logitech, the Logitech logo and other Logitech marks are owned by Logitech and may be registered. All other trademarks are the properties of their respective owners. Logitech assumes no responsibility for any errors that may appear in this publication. Product, pricing and feature information contained herein is subject to change without notice.